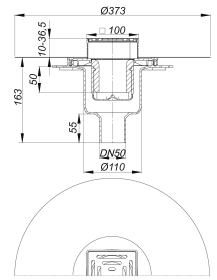
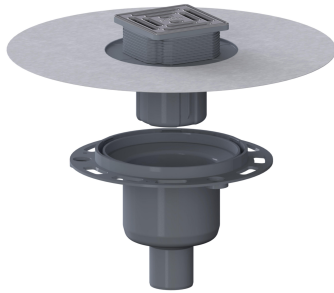


floor drain DalIDrain Select vertical OM, DN 50/DN 100, 100 x 100 mm

Part number: 517647
GTIN: 4001636517647
Rebate group: 6



Description:

floor drain DallDrain Select vertical OM, DN 50/DN 100, 100 x 100 mm
conforming to DIN EN 1253

Floor drain including grating DallDrain Select with stainless steel grate in stainless steel frame. Outlet DN 50/DN 100 vertical.

Specification

- Stainless steel grate and frame
- Integrated screed anchoring
- Flexible, click-in sealing sleeve for secure connection to bonded and sheet waterproofing conforming to DIN 18534
- Fully removable, two-piece trap insert and rodding eye, 50 mm water seal (conforming to DIN EN 1253)
- Temporary blanking plate
- Spigot can be shortened for floorings 10 – 36 mm (including adhesive)

Material

Polypropylene drain body and outlet, highly impact-resistant; 1.4301 stainless steel grate, load class K 3 (300 kg); spigot in ABS, frame in 1.4301 stainless steel

Pre-assembled set consisting of parts no. 517265 + 517234.

Grating with positioning aid laterally adjustable +/- 2.5 mm.

Fire protection kit DN 50 (Part No. 545008) or fire protection kit 12 (Part No. 515438) applicable.

Can be connected to British standard pipework with adaptor part No. 880727.

floor drain DallDrain Select vertical OM, DN 50/DN 100, 100 x 100 mm:

Pre-assembled set consisting of parts no. 517265 + 517234.

Grating with positioning aid laterally adjustable +/- 2.5 mm.

floor drain DallDrain Select vertical OM, DN 50/DN 100, 120 x 120 mm:

Pre-assembled set consisting of parts no. 517296 + 517234.

Grating with positioning aid laterally adjustable +/- 9.5 mm.

Flow rates tested to DIN EN 1253:

Nominal diameter	Product standard	Min. flow rate according to norm	Water level according to norm	Flow rate at water level 10 mm	Flow rate at water level 20 mm	Drainage capacity
DN 50	DIN EN 1253	0.80 l/s	20.00 mm	0.72 l/s	1.30 l/s	1.3 l/s